

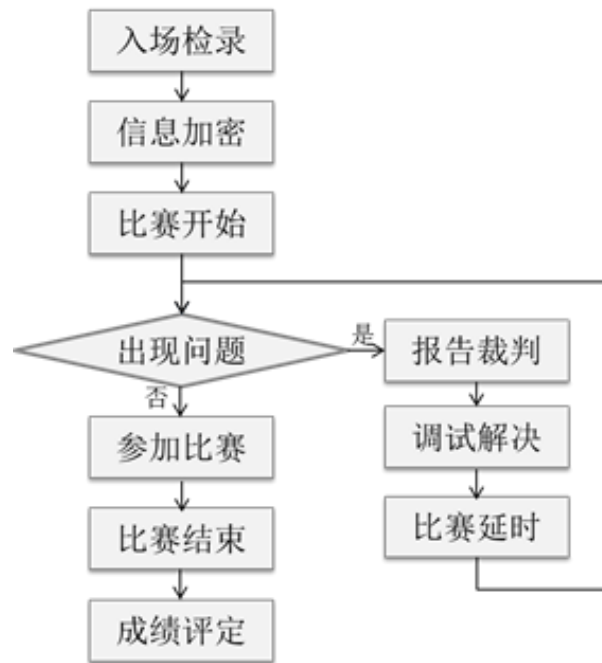
2022

1 2 1 2 3 2
1 1
3 6

6

3 21	09:00-14:00			
	15:20			
	16:00-17:00			
	17:00-17:30			
	17:00-17:30			
	17:30			
3 22	06:20			
	07:00			
	08:00			
	08:15			
	08:30			
	08:35			

	08:45			
	08:50			
	09:00-15:00			
	12:00			
	12:00			
	16:00-19:00			
	16:00			



Hadoop

Spark Flink

Spark Core Spark SQL Flume Kafka Flink

Hive HBase Redis Maxwell ClickHouse MySQL

1. Hadoop

Spark

Flink

2. Spark Hive
 Flume Maxwell Kafka
3. Flink Kafka Hive Redis HBase ClickHouse Scala
Flink Kafka
HBase Hive Redis
- ClickHouse
4. Spark Hive MySQL HBase ClickHouse Scala
Hive Spark
MySQL HBase
- ClickHouse
5. HTML CSS JavaScript Vue.js ECharts
- 6.
7. 6

	Docker
	Hadoop
	Spark
	Flink
	Hive
	Kafka
	Flume
	ClickHouse

	HBase
	Spark MySQL ods
	Flume Kafka Topic
	Maxwell MySQL binlog Kafka Topic
	Flink Kafka Kafka dwd
	Flink Kafka HBase
	Flink Redis
	Flink ClickHouse
	Spark ods
	dwd
	dwd Spark
	MySQL dwd Spark
	HBase dwd Spark
	ClickHouse dwd Spark
	Vue.js ECharts

	6	10%
		15%
		25%
		20%
		15%
		10%

		5%
--	--	----

1.

2. 1

3.

4.

U

5.

6.

7.

8.

9.

1.

2.

3.

220V/3A

4.

5.

6.

JGJ46-2005

GB/T 11457-2006	
GB8566-88	
GB/T 12991-2008	SQL 1
GB/T 21025-2007	XML
GB/T 20009-2005	
GB/T 20273-2006	
20100383-T-469	

--	--

	1 10%		i 5 64GB 1TB 1024*768
	3 10%		i 5 16GB 1TB 1024*768

2022

--

Docker

- 1 Linux / ,
- 2
- 3
- 4
- 5
- 6 Dockerfile

7

CPU

8

IP

CPU

9

10

11

IP

IP

12

LOGO

LOGO

13

14

15

" "

16

17

18

19

20

Linux

21

		CentOS 7 Docker-CE 20.10
		Hadoop 3.1.3
		Hive 3.1.2
		HBase 2.2.3
		Spark 3.1.1
		Kafka 2.4.1
		Redis 6.2.6
		Flume 1.9.0
		Maxwell 1.29.0
		Flink 1.14.0
		ClickHouse 21.9.4

U

0

10		Hadoop Hive Kafka Flume ClickHouse HBase	Docker Spark Flink	Hadoop Spark Flink Kafka Flume ClickHouse HBase
15		Maxwell Kafka	Scala Spark Linux Flink Flume	Spark Flume Maxwell Kafka
25		dwd Hive HBase Flink Redis	Scala Flink Kafka	Flink HBase Hive ClickHouse Redis

		ClickHouse		
20		Scala Spark MySQL HBase ClickHouse	Spark HBase Hive ClickHouse MySQL	20

15

10%

PC

PC

PC

1.

2.

3.

4.

1.

2.

/

3.

1.

2.

3.

1.

2.

3.

1.

2.

2

3.

2

4.

1. 2022

"

"

2.

1.

2.

3

1

2

2

3.

1

4.

10

5.

6.

7.

8.

9.

1.

2.

" "

3.

4.

5.

6.

7.

8.

1.

2.

3.

4.

5.

6.

7.

U

8.

9.

10.

11.

12.

13.

U

U

14.

15.

16.

:

1

/

3

1.

1

2.

3.

4.

5.

6.